

THE UNIVERSITY OF THE STATE OF NEW YORK

GRADE 4

ELEMENTARY-LEVEL SCIENCE TEST

WRITTEN TEST

JUNE 3, 2019

Student Name _____

School Name _____

The possession or use of any communications device is strictly prohibited when taking this examination. If you have or use any communications device, no matter how briefly, your examination will be invalidated and no score will be calculated for you.

Print your name and the name of your school on the lines above.

The test has two parts. Parts I and II are in this test booklet.

Part I contains 30 multiple-choice questions. Record your answers to these questions on the separate answer sheet. Use only a No. 2 pencil on your answer sheet.

Part II consists of 15 open-ended questions. Write your answers to Part II in this test booklet.

You will have as much time as you need to answer the questions.

DO NOT TURN THIS PAGE UNTIL YOU ARE TOLD TO DO SO.

Copyright 2019

THE UNIVERSITY OF THE STATE OF NEW YORK

THE STATE EDUCATION DEPARTMENT

ALBANY, NEW YORK 12234

DIRECTIONS

There are 30 questions on Part I of this test. Each question is followed by four choices, labeled A–D. Read each question carefully. Decide which choice is the best answer. On the separate answer sheet, mark your answer in the row of circles for each question by filling in the circle that has the same letter as the answer you have chosen. Use a No. 2 pencil to mark the answer sheet.

Read Sample Question **S-1** below.

<p>S-1 Frozen water is called</p> <p>A fog</p> <p>B ice</p> <p>C steam</p> <p>D vapor</p>
--

The correct answer is **ice**, which is next to letter **B**. On your answer sheet, look at the box showing the row of answer circles for Sample Question **S-1**. See how the circle for letter **B** has been filled in.

Now read Sample Question **S-2**. Mark your answer on the answer sheet in the box showing the row of answer circles for Sample Question **S-2**.

S-2 Which animal has wings?

- A bird
- B frog
- C mouse
- D rabbit

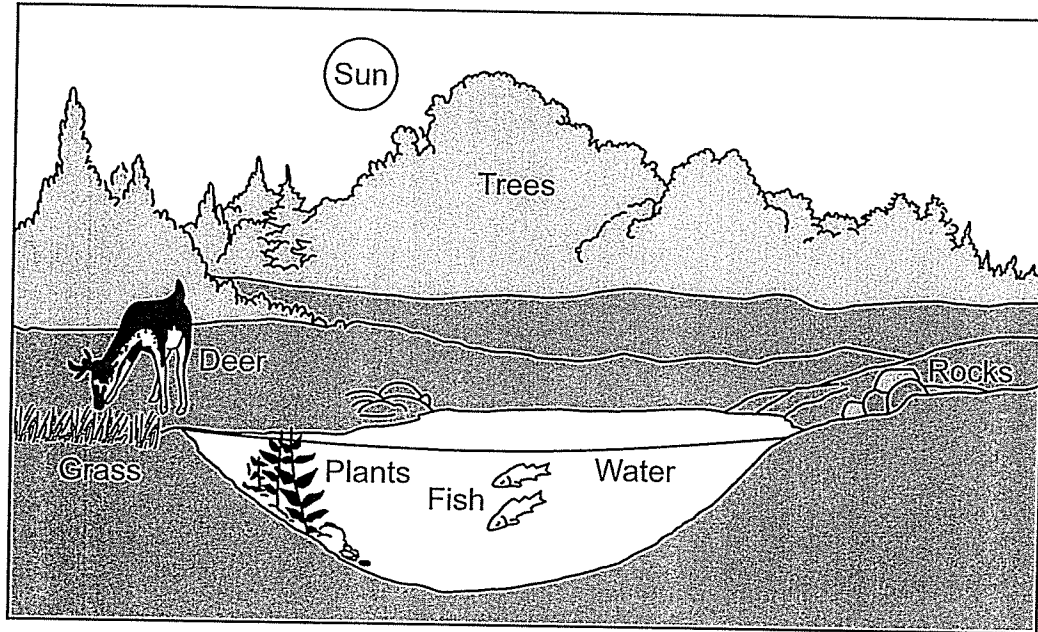
The correct answer is **bird**, which is next to letter **A**. On your answer sheet, you should have filled in circle **A**.

Answer all 30 questions on Part I of this test. Fill in only one circle for each question. Be sure to erase completely any answer you want to change. You may not know the answers to some of the questions, but do the best you can on each one.

When you have finished Part I, go on to Part II. Answer all of the questions in Part II in the space for each question.

Part I

1 The diagram below shows a pond near a forest.



(Not drawn to scale)

Which two objects labeled in the diagram are *nonliving*?

- A fish and plants
 - B grass and deer
 - C rocks and water
 - D trees and Sun
- 2 Which process causes a giraffe to become taller?
- A reproduction
 - B growth
 - C decomposition
 - D movement

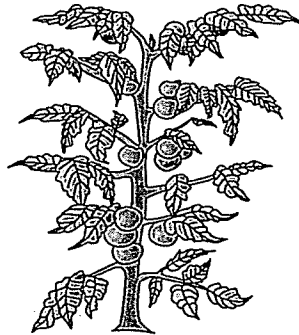
3 A basic need of both plants and animals is

- A soil
- B light
- C shelter
- D water

4 An example of an inherited trait is

- A riding a bicycle
- B having a broken arm
- C having brown eyes
- D living in New York State

5 The diagram below shows a mature parent plant.



Which young plant is most likely the offspring of this mature parent plant?



A



B



C



D

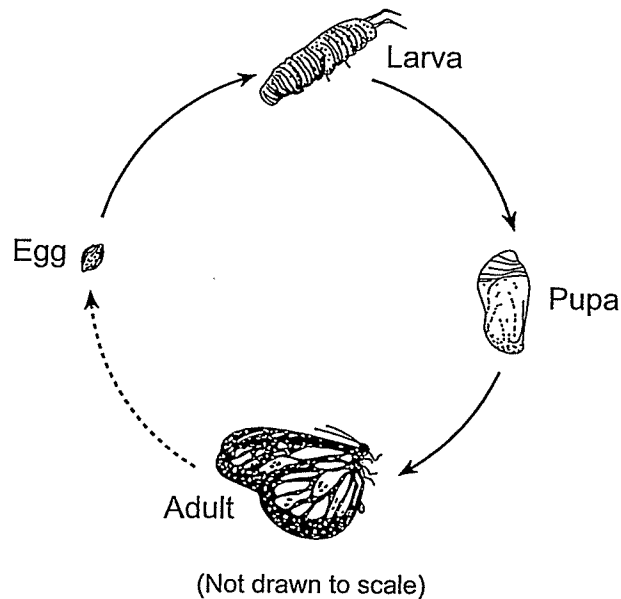
6 Which plant structure makes seeds?

- A stem
- B flower
- C roots
- D leaf

7 Whales have thick blubber to help keep them warm in cold ocean waters and protect them from injury. The blubber of a whale is

- A an adaptation to its environment
- B a characteristic used to attract a mate
- C a body structure common to all organisms
- D a waste product that needs to be eliminated

8 The diagram below shows the development of a butterfly.



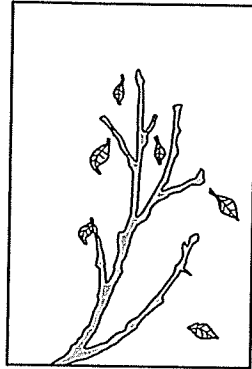
This sequence of changes is called

- A hibernation
- B migration
- C a life span
- D a life cycle

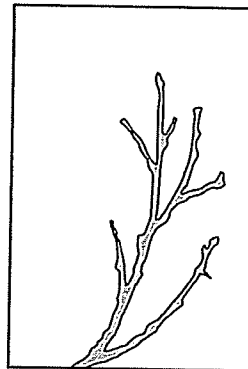
- 9 The diagrams below show the same branch from a tree in New York State during each of the four seasons.



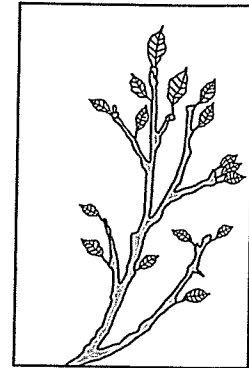
A



B



C



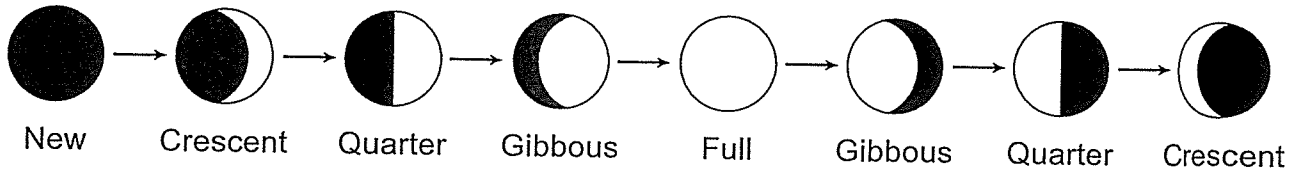
D

If students took a field trip during January, which diagram would most likely represent what the branches on most trees would look like in New York State?

- A A
 - B B
 - C C
 - D D
- 10 As the length of daylight shortens and the temperatures cool, geese and some other birds fly south from New York State. This behavioral change is known as
- A communicating
 - B hunting
 - C migration
 - D hibernation
- 11 In which example is the organism defending itself?
- A A fox smells food.
 - B An owl sees a mouse.
 - C A bee lands on a colorful flower.
 - D A skunk produces an odor.

- 12 Animals that eat other animals for food are classified as
- A decomposers
 - B predators
 - C producers
 - D prey
- 13 Warmer temperatures can cause a deer to rub against trees to remove clumps of heavy fur. This behavior is helping the deer to
- A reproduce
 - B feel cooler
 - C store fat
 - D camouflage itself
- 14 Which sequence shows the order of energy flow in a food chain?
- A Sun → rabbit → grass → owl
 - B grass → rabbit → owl → Sun
 - C Sun → grass → rabbit → owl
 - D owl → rabbit → grass → Sun
- 15 When a beaver senses a predator approaching, it slaps its tail on the surface of the water. This action is an example of an animal using a body part to
- A find food
 - B attract a mate
 - C build a shelter
 - D communicate information
- 16 How long does it take for Earth to complete one path around the Sun?
- A one day
 - B one week
 - C one month
 - D one year

17 The diagram below shows the changing appearance of an object in space as viewed by an observer in New York State.



The diagram shows the changing appearance of

- A the Moon as it revolves around Earth
- B Earth as it revolves around the Moon
- C the Sun as it revolves around Earth
- D Earth as it revolves around the Sun

18 Which process causes a wet towel to become dry?

- A condensation
- B evaporation
- C precipitation
- D deposition

19 Hard, light-colored, and smooth are observations that describe a

- A glass marble
- B rain cloud
- C cat's fur
- D cotton ball

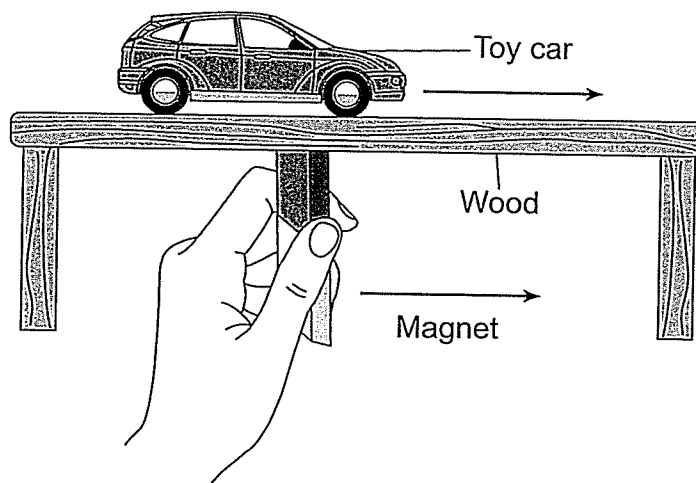
20 A student drops a button and a nickel, and they both fall to the floor. What causes both of these items to fall to the floor?

- A magnetism
- B electricity
- C sound
- D gravity

21 Which tool would be used to find the weight of a balloon that is filled with water?

- A graduated cylinder
- B metric ruler
- C spring scale
- D thermometer

22 The diagram below shows a student using a magnet to move a toy car across a table made of wood.



(Not drawn to scale)

In order for the car to be moved by the magnet, the car must contain which material?

- A glass
- B metal
- C plastic
- D wood

23 Ice is solid water that has

- A a definite shape and a definite volume
- B a definite shape, but no definite volume
- C no definite shape and no definite volume
- D no definite shape, but a definite volume

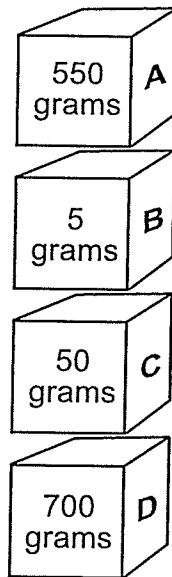
24 Which color of shirt would absorb the most sunlight?

- A white
- B yellow
- C pink
- D black

25 Which statement best describes how energy can be *harmful*?

- A A fire burns down a house.
- B Electricity heats an oven.
- C A lamp lights a house.
- D An alarm clock wakes up a sleeping person.

26 The diagram below shows four boxes labeled A, B, C, and D. The mass of each box is shown.



Which box is **under** the box with a mass of 50 grams?

- A box A
- B box B
- C box C
- D box D

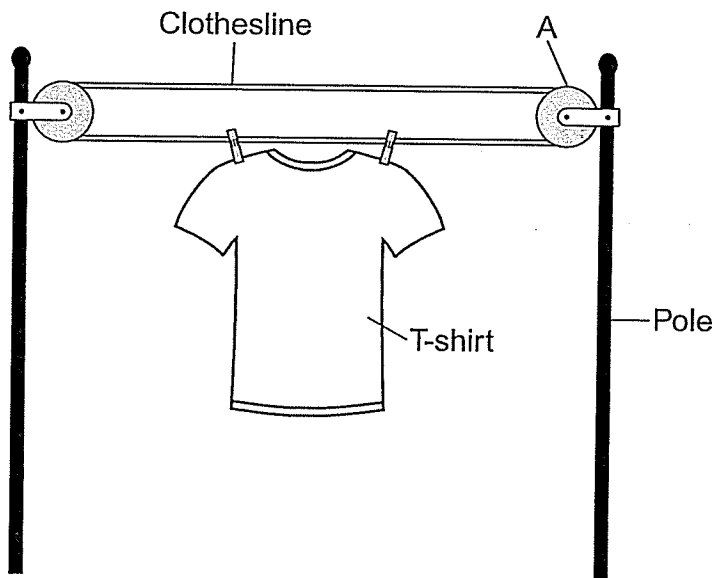
27 It is harder to push a box up a ramp with a rough surface than up one with a smooth surface because the rough surface provides more

- A motion
- B friction
- C gravity
- D magnetism

28 A boy can see his face when he looks into a mirror. Which physical property of the mirror makes this happen?

- A reflectiveness
- B temperature
- C flexibility
- D volume

29 The diagram below shows a T-shirt hanging on a clothesline. Letter A represents a simple machine.



Which type of simple machine is represented by letter A?

- A lever
- B balance
- C pulley
- D inclined plane

30 A student is writing a report about a famous scientist and author, and records the following information.

1. Rachel Carson was born in 1907.
2. She went to school in Pennsylvania.
3. She is the author of the most important book about the environment ever written.
4. Rachel Carson was 11 years old when her first story appeared in a magazine.

Which piece of information is an opinion?

- A 1
- B 2
- C 3
- D 4
