



Barnard College	Columbia University	New York University
Ms. Park	Ms. Hildebrand	Ms. Severino

Monday  
February 1, 2021

Name:

M4 L 28 Day 1:

Read the word problem

Jerry made 200 pizzas. He sold some of them and had 57 pizzas left.  
How many did he sell?

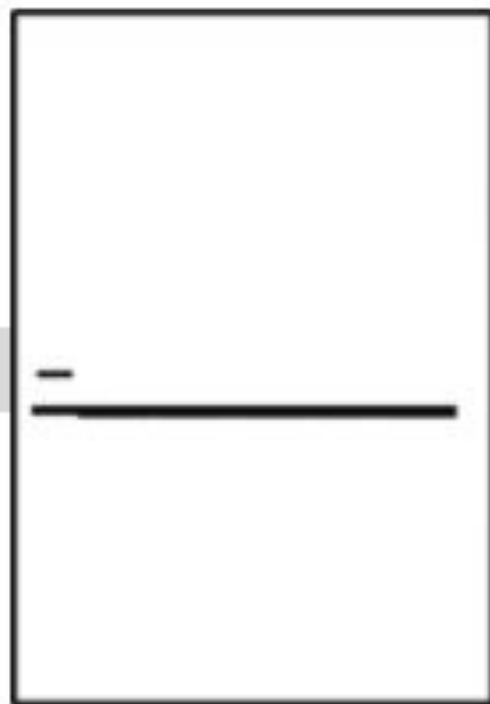
Check off each thing as we answer!

- Read the question
  - Re-read the question
  - How many pizzas? \_\_\_\_\_
  - What did he do with the pizzas? \_\_\_\_\_
  - How many pizzas are left? \_\_\_\_\_
  - What is the question?
- 
-

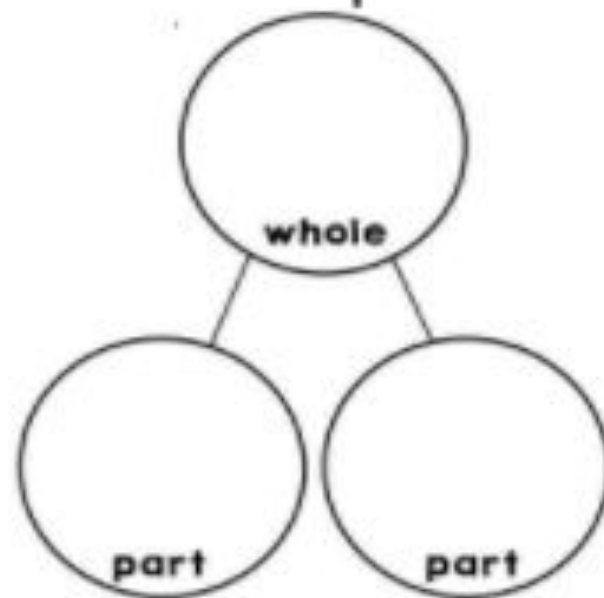
## Concept development

1.  $106 - 58 =$

Look at the numbers on top, do we need to **unbundle** (decompose) the **WHOLE** to subtract?



Hundreds	tens	ones





4.  $200 - 67 =$

Look at the numbers on top, do we need to unbundle (decompose) the WHOLE to subtract?

---

$\begin{array}{r} \phantom{00} \\ \underline{\phantom{00}} \\ \phantom{00} \end{array}$
---

Hundreds	tens	ones

5.  $200 - 33 =$

Look at the numbers on top, do we need to unbundle (decompose) the WHOLE to subtract?

---

$\begin{array}{r} \phantom{00} \\ \underline{\phantom{00}} \\ \phantom{00} \end{array}$
---

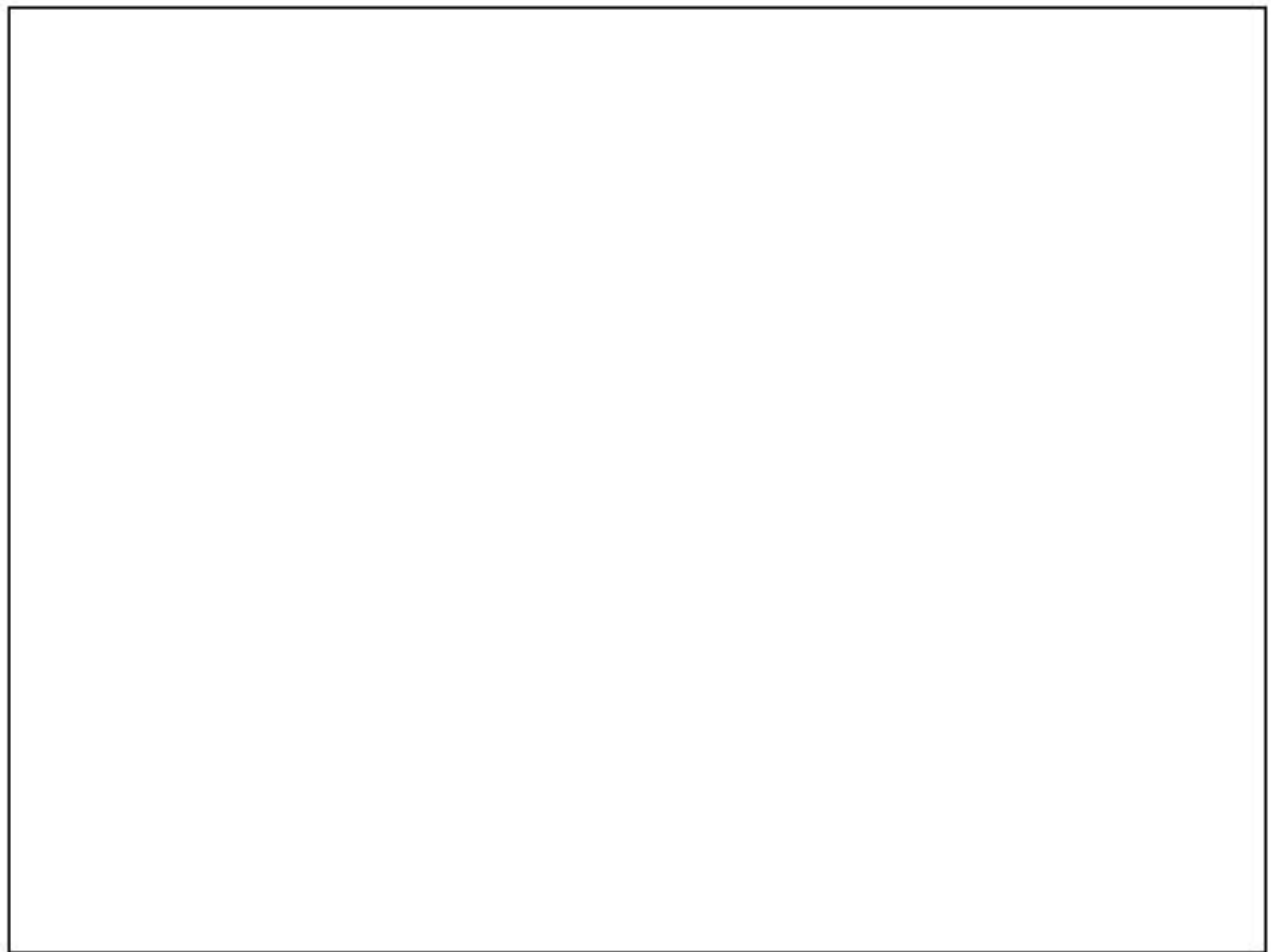
Hundreds	tens	ones



# Mystery Sort Recording Form

Name: \_\_\_\_\_ Date: \_\_\_\_\_

**Directions:** Sketch the parts of your sort in the box below.  
Describe parts with words on lines below.



---

---

---

Name: \_\_\_\_\_

Date: \_\_\_\_\_

College: \_\_\_\_\_

Class of: \_\_\_\_\_

The red table has 35 table points. How many more table points does the red table need to have 91 points?

Answer: \_\_\_\_\_

Equation that matches your work: Number Sentence

\_\_\_\_\_

Sentence that matches the story: Word Sentence

\_\_\_\_\_





Barnard College	Columbia University	New York University
Ms. Park	Ms. Hildebrand	Ms. Severino

Tuesday  
February 2, 2021

Name: \_\_\_\_\_

Solve vertically. Draw chips on the place value chart. Unbundle when needed.

1.)  $113 - 75 =$  \_\_\_\_\_

hundreds	tens	ones

2.)  $131 - 79 =$  \_\_\_\_\_

hundreds	tens	ones

3.)  $145 - 86 =$  \_\_\_\_\_

hundreds	tens	ones

4.)  $108 - 46 =$  \_\_\_\_\_

hundreds	tens	ones

5.)  $200 - 126 =$  \_\_\_\_\_

hundreds	tens	ones

Solve vertically with or without a place value chart.

6.)  $107 - 69 =$  \_\_\_\_\_

7.)  $120 - 48 =$  \_\_\_\_\_

8.)  $100 - 47 =$  \_\_\_\_\_

9.)  $100 - 42 =$  \_\_\_\_\_

10.)  $187 - 75 =$  \_\_\_\_\_

## Detailed Illustrations and Labels (Seed, Plant, Flower, Fruit)

**Directions:** Choose a plant set and draw a detailed illustration of each stage within each box. Use the words seed, plant, flower, and fruit to label each stage.

Plant Set Name: \_\_\_\_\_

--	--	--	--

If you finish drawing and labeling all plant parts, fill in the blanks below.

First, there are \_\_\_\_\_. Next come \_\_\_\_\_.

Next come \_\_\_\_\_. Next come \_\_\_\_\_.





Barnard College	Columbia University	New York University
Ms. Park	Ms. Hildebrand	Ms. Severino

Wednesday  
February 3, 2021

M4 L 28 Day 2:

Read the word problem

Jerry made 200 pizzas. He sold some of them and had 57 pizzas left.  
How many did he sell?

Check off each thing as we answer!

- Read the question
  - Re-read the question
  - How many pizzas? \_\_\_\_\_
  - What did he do with the pizzas? \_\_\_\_\_
  - How many pizzas are left? \_\_\_\_\_
  - What is the question?
- 
- 

- Draw something to help you solve this! |

Show 157 using hundreds, tens, and ones. 🔊

hundreds	tens	ones
- +	- +	- +

**Add 10 to 157.**

What is the value now? \_\_\_\_\_

$$157 + 10 = \boxed{\phantom{00}}$$

$$167 = 157 + \boxed{\phantom{00}}$$

**Subtract 10 from 157.** 🔊

hundreds	tens	ones
	- +	
100	10 10 10 10 10	1 1 1 1 1 1 1

What is the value now? \_\_\_\_\_

$$157 - 10 = \boxed{\phantom{00}}$$

$$147 = 157 - \boxed{\phantom{00}}$$



Add 100 to 157. 🔊

hundreds - +	tens	ones
100	10 10 10 10 10	1 1 1 1 1 1 1

What is the value now? \_\_\_\_\_

$$157 + 100 = \boxed{\phantom{000}}$$

$$257 = 157 + \boxed{\phantom{000}}$$

Subtract 100 from 157. 🔊

hundreds - +	tens	ones
100	10 10 10 10 10	1 1 1 1 1 1 1

What is the value now? \_\_\_\_\_

$$157 - 100 = \boxed{\phantom{000}}$$

$$57 = 157 - \boxed{\phantom{000}}$$

Name \_\_\_\_\_

Date \_\_\_\_\_

1. Complete each *more* or *less* statement.

a. 10 more than 175 is \_\_\_\_\_.

b. 100 more than 175 is \_\_\_\_\_.

c. 10 less than 175 is \_\_\_\_\_.

d. 100 less than 175 is \_\_\_\_\_.

2.

$542 \xrightarrow{+100}$  \_\_\_\_\_  $\xrightarrow{-10}$  \_\_\_\_\_  $\xrightarrow{-10}$  \_\_\_\_\_  $\xrightarrow{-100}$  \_\_\_\_\_  $\xrightarrow{-100}$  \_\_\_\_\_.

$367 \xrightarrow{-100}$  \_\_\_\_\_  $\xrightarrow{-100}$  \_\_\_\_\_  $\xrightarrow{-10}$  \_\_\_\_\_  $\xrightarrow{-10}$  \_\_\_\_\_.

3. Complete each statement.

a.  $235 \xrightarrow{+10}$  \_\_\_\_\_  $\xrightarrow{+100}$  \_\_\_\_\_

b.  $391 \xrightarrow{-100}$  \_\_\_\_\_  $\xrightarrow{-10}$  \_\_\_\_\_

d.  $311 \xrightarrow{-10}$  \_\_\_\_\_  $\xrightarrow{-10}$  \_\_\_\_\_  $\xrightarrow{+100}$  \_\_\_\_\_  $\xrightarrow{+100}$  \_\_\_\_\_  $\xrightarrow{+10}$  \_\_\_\_\_

**Lesson 1**  
G:2 M:5

**EXIT TICKET**

Name: \_\_\_\_\_ Date: \_\_\_\_\_

Complete:

Class: \_\_\_\_\_

1. Solve using the arrow way.

a.  $440 + 220 = \underline{\hspace{2cm}}$

b.  $670 + \underline{\hspace{2cm}} = 890$

c.  $\underline{\hspace{2cm}} + 765 = 945$



## Seed to Plant Questions: What Is a Plant?

**Directions:** Answer the questions below about pages 4–7 of *Seed to Plant* (National Geographic). Use your copy of the text to help if needed.

1. What is the main topic the author describes on pages 4–5?
  - (A) How plants grow
  - (B) What plants are
  - (C) Who needs plants
2. Based on page 4, what is one way that the author defines a plant?
  - (A) It stays in one place.
  - (B) It has green leaves.
  - (C) It can have flowers.
3. What is the main topic the author describes on pages 6–7 in this text?
  - (A) Where plants grow in the world
  - (B) How plants are important in the world
  - (C) Why people love plants in the world
4. Based on page 6, why does it help people when farmers grow fruits and vegetables?
  - (A) They give us homes.
  - (B) They give us clothing.
  - (C) They give us food.

5. Write a sentence about one thing you learned today:

---

---

---

The shelter rescued 27 kittens in June. In July, 11 kittens were rescued. In August, 40 more were rescued.

- a. How many kittens did the shelter rescue during those 3 months?

Answer: \_\_\_\_\_

Equation that matches your work: Number Sentence

Sentence that matches the story: Word Sentence



Barnard College	Columbia University	New York University
Ms. Park	Ms. Hildebrand	Ms. Severino

Thursday  
February 4, 2021

M4 L 28 Day 3:

Read the word problem

Jerry made 200 pizzas. He sold some of them and had 57 pizzas left.  
How many did he sell?

Check off each thing as we answer!

- Read the question
- Re-read the question
- How many pizzas? \_\_\_\_\_
- What did he do with the pizzas? \_\_\_\_\_
- How many pizzas are left? \_\_\_\_\_
- What is the question?

- 
- 
- Let's solve it!!

$$450 + 300 \longrightarrow \boxed{\phantom{000}}$$

$$450 \xrightarrow{+100} \boxed{\phantom{000}} \xrightarrow{+100} \boxed{\phantom{000}} \xrightarrow{+100} \boxed{\phantom{000}}$$

Hundreds	Tens	Ones

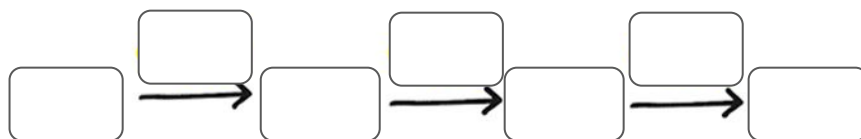
$$447 + 200 = \boxed{\phantom{000}}$$

$$\boxed{\phantom{000}} \xrightarrow{+100} \boxed{\phantom{000}} \xrightarrow{+100} \boxed{\phantom{000}}$$

Hundreds	Tens	Ones



$582 - 300 = \square$



Hundreds	Tens	Ones

$383 + \square = 783$

$383 \xrightarrow{+100} \square \xrightarrow{+100} \square \xrightarrow{+100} \square \xrightarrow{+100} 783$

$\square - 200 = 656$

Name \_\_\_\_\_

Date \_\_\_\_\_

1. Solve each addition problem using place value strategies. Use the arrow way or mental math, and record your answers. You may use scrap paper if you like.

a. 2 hundreds 4 tens + 3 hundreds = \_\_\_\_\_ hundreds \_\_\_\_\_ tens

$$240 + 300 = \underline{\hspace{2cm}}$$

b.  $340 + 300 = \underline{\hspace{2cm}}$

$140 + 500 = \underline{\hspace{2cm}}$

$200 + 440 = \underline{\hspace{2cm}}$

c.  $400 + 374 = \underline{\hspace{2cm}}$

$274 + 500 = \underline{\hspace{2cm}}$

$700 + 236 = \underline{\hspace{2cm}}$

d.  $571 + \underline{\hspace{2cm}} = 871$

$\underline{\hspace{2cm}} + 349 = 749$

$96 + \underline{\hspace{2cm}} = 696$

2. Solve each subtraction problem using place value strategies. Use the arrow way or mental math, and record your answers. You may use scrap paper if you like.

a. 6 hundreds 2 ones – 4 hundreds = \_\_\_\_\_ hundreds \_\_\_\_\_ tens \_\_\_\_\_ ones

$$602 - 400 = \underline{\hspace{2cm}}$$

b.  $640 - 200 = \underline{\hspace{2cm}}$        $650 - 300 = \underline{\hspace{2cm}}$        $750 - \underline{\hspace{2cm}} = 350$

c.  $462 - 200 = \underline{\hspace{2cm}}$        $667 - 500 = \underline{\hspace{2cm}}$        $731 - 400 = \underline{\hspace{2cm}}$

d.  $431 - \underline{\hspace{2cm}} = 131$        $985 - \underline{\hspace{2cm}} = 585$        $768 - \underline{\hspace{2cm}} = 68$

e.  $\underline{\hspace{2cm}} - 200 = 662$        $\underline{\hspace{2cm}} - 300 = 653$        $734 - \underline{\hspace{2cm}} = 234$

**Lesson 2**  
G:2 M:5

**EXIT TICKET**

Name: \_\_\_\_\_ Date: \_\_\_\_\_

Complete:  Class: \_\_\_\_\_

Solve using place value strategies. Use the arrow way or mental math, and record your answers. You may use scrap paper if you like.

1.

$$760 - 500 = \underline{\quad}$$

$$880 - 600 = \underline{\quad}$$

$$990 - \underline{\quad} = 590$$

2

$$534 - 334 = \underline{\quad}$$

$$\underline{\quad} - 500 = 356$$

$$736 - \underline{\quad} = 136$$



# Read About External Plant Parts

## EXTERNAL PLANT PARTS DEFINITION

Plants have external parts that help them grow, survive and reproduce. These parts include the stem, leaves, flower, fruits and roots. Many plant parts are eaten by people.

*To better understand how external plant parts work...*

## LET'S BREAK IT DOWN!

### The stem is an external plant part.

The stem is strong and helps hold the plant up. It also lets water and nutrients flow up to the leaves. Some examples of stems we eat are celery, asparagus, and sugar cane.



### Leaves are an external plant part.

Leaves collect sunlight and make food for the plant. Leaves come in many different shapes and sizes, but most leaves are flat and green. Some examples of leaves we eat are mint and spinach.

---

## Flowers are an external plant part.

Flowers are the parts of plants that make seeds and fruits. Some examples of flowers we eat are lavender and roses. Flowers are colorful so they can attract animals like hummingbirds and bees.



---

## Fruits are an external plant part.

Fruits are the part of plants that protect seeds and helps the seed get moved from place to place by an animal. Animals like to eat fruit because most of them taste sweet.



---

## Roots are an external plant part.

Roots absorb water and minerals from the soil and hold the plant in the ground so it does not fall over. Some examples of roots we eat are potatoes, carrots and beets.



The shelter rescued 27 kittens in June. In July, 11 kittens were rescued. In August, 40 more were rescued.

- b. If 64 of those kittens found homes by the end of August, how many still needed homes?

Answer: \_\_\_\_\_

Equation that matches your work: Number Sentence

Sentence that matches the story: Word Sentence



Barnard College	Columbia University	New York University
Ms. Park	Ms. Hildebrand	Ms. Severino

Friday  
February 5, 2021



M4 L 28 Day 4:

Here is a similar question, Now try to solve it!

Jerry made 100 pizzas. He sold some of them and had 67 pizzas left.  
How many did he sell?

Check off each thing as we answer!

- Read the question
- Re-read the question
- How many pizzas? \_\_\_\_\_
- What did he do with the pizzas? \_\_\_\_\_
- How many pizzas are left? \_\_\_\_\_
- What is the question?

- 
- 
- Let's solve it!!

**Problem 1:  $420 + 100$**

Arrow way:

Vertical way

**$420 + 110$**

Arrow way:

Vertical way

## Problem 2: $550 + 200$

Arrow way:

Vertical way

## $550 + 250$

Arrow way:

Vertical way

## $550 + 260$

Arrow way:

Vertical way

**Lesson 3**  
G:2 M:5

**EXIT TICKET**

Name: \_\_\_\_\_ Date: \_\_\_\_\_

Complete:  Class: \_\_\_\_\_

1. Solve each set of problems using the arrow way.

**a.**  $440 + 300$

$360 + 440$

$440 + 380$

**b.**  $670 + 230$

$680 + 240$

$250 + 660$





6

A sunflower head has 1,000 to 2,000 ray and disk flowers.

A sunflower produces hundreds of seeds. The seeds are found in the flower head. The sunflower has two kinds of petals on the flower head. The disk flowers are in the middle of the head. They are usually brown. The yellow ray flowers grow around the disk flowers.

The seed is the beginning of a sunflower. It starts in the flower head, then it falls to the ground. The seed can stay on the ground for a long time. When the soil temperature reaches 40 to 50 °F (4.4 to 10 °C), the seed starts to **germinate** (*JER-mih-nate*).

7



How does the life cycle of a sunflower repeat?

---

---

---

---

---

---

---

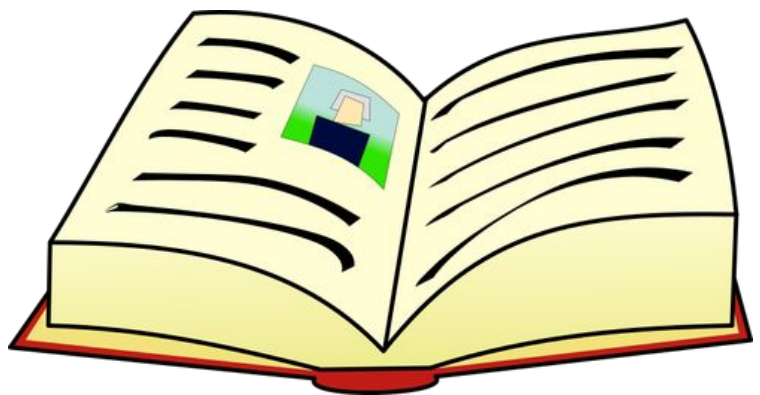


Barnard College	Columbia University	New York University
Ms. Park	Ms. Hildebrand	Ms. Severino

# Close Reading

February 1-5, 2021

Name:



Name: \_\_\_\_\_

# Robins



Baby robins are born in the spring. They hatch out of beautiful light blue eggs. The mother robin usually lays 3 to 5 eggs in the nest she and the male robin build together. After the baby robins have hatched, they are very demanding and hungry. The robin parents spend a lot of time feeding their hungry brood worms, bugs, and berries.

ASH©2015

## 1. Remembering: Main Idea

Who? \_\_\_\_\_ → \_\_\_\_\_  
What? \_\_\_\_\_ → \_\_\_\_\_  
Why? \_\_\_\_\_ → \_\_\_\_\_

## 2. Understanding: Details

Write 3 sentences about what you remember or learned.

\_\_\_\_\_  
\_\_\_\_\_  
\_\_\_\_\_

## 3. Applying

Why is it important for the robin parents to feed the babies so often?

\_\_\_\_\_

#### **4. Analyzing**

What kind of diet do the baby birds need?

---

---

---

#### **5. Evaluating**

What could you infer would happen if the robin parents had a large number of babies to feed?

---

---

---

#### **6. Creating**

If you could help the robin parents build a nest what shape and materials would you choose?

---

---

---

#### **7. Your Opinion**

What was the most interesting fact you learned about a robin?

---

---